

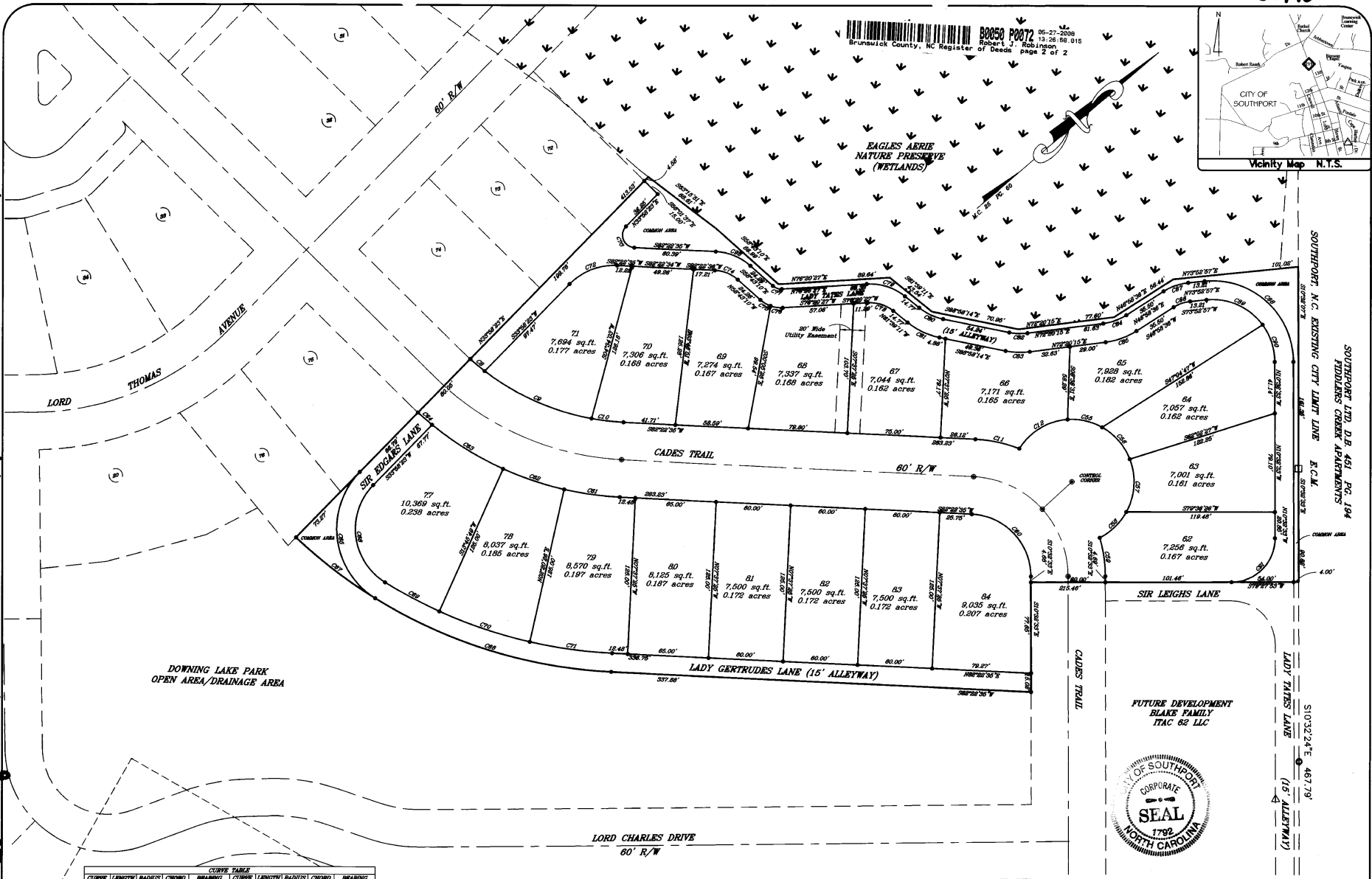
BRUNSWICK COUNTY, NC REGISTER OF DEEDS  
80850 P0072 05-27-2008  
13:28:58.015  
Robert J. Robinson  
of Deeds page 2 of 2

EAGLES ABBIE  
NATURE PRESERVE  
(WETLANDS)

KH

skan/08

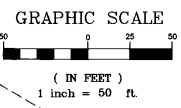
Map Cabinet 5D Dog M



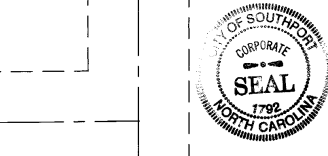
CLIQUE	LENGTH	RADIUS	CHORD	BEARING	CLIQUE	LENGTH	RADIUS	CHORD	BEARING
C61	15.00'	300.00'	15.00'	S89°54'30"W	C74	50.97'	50.00'	18.00'	N70°10'17"E
C62	86.78'	300.00'	86.81'	S89°54'30"W	C75	0.44'	50.00'	0.43'	S89°54'30"W
C63	17.00'	100.00'	17.00'	N70°10'17"E	C76	10.13'	50.00'	10.00'	S87°26'51"E
C64	38.00'	118.00'	38.00'	N89°21'26"W	C77	7.84'	10.00'	7.84'	S81°21'21"E
C65	47.17'	50.00'	46.44'	S89°54'30"W	C78	31.80'	50.00'	31.81'	N88°30'20"W
C66	38.77'	50.00'	38.47'	S89°54'30"W	C79	38.00'	50.00'	38.00'	N88°30'20"W
C67	34.67'	50.00'	33.82'	N88°30'20"W	C80	31.46'	45.00'	31.81'	S78°16'50"E
C68	45.67'	50.00'	45.00'	N88°30'20"W	C81	38.61'	50.00'	38.61'	S78°16'50"E
C69	39.15'	50.00'	38.90'	N70°10'17"E	C82	14.00'	45.00'	14.00'	N88°30'20"W
C70	31.00'	118.00'	31.00'	N89°21'26"W	C83	18.57'	50.00'	18.48'	N88°30'20"W
C71	78.00'	50.00'	78.00'	N88°30'20"W	C84	18.00'	45.00'	18.00'	N88°30'20"W
C72	46.00'	300.00'	46.15'	N89°21'26"W	C85	38.00'	50.00'	38.00'	N88°30'20"W
C73	51.00'	300.00'	51.75'	N89°21'26"W	C86	14.00'	38.00'	13.80'	S89°54'30"W
C74	57.11'	300.00'	57.00'	S89°54'30"W	C87	57.11'	45.00'	56.80'	S89°54'30"W
C75	15.00'	300.00'	15.00'	S89°54'30"W	C88	106.43'	60.00'	106.24'	N82°16'58"E
C76	116.00'	60.00'	116.62'	S72°07'00"E	C89	51.00'	50.00'	49.24'	N70°10'17"E
C77	88.00'	100.00'	88.00'	S89°54'30"W	C90	51.00'	50.00'	51.07'	N89°54'30"E
C78	88.00'	100.00'	88.07'	S89°54'30"E	C91	54.00'	50.00'	49.00'	N28°22'50"E
C79	88.00'	100.00'	78.10'	S72°07'00"E	C92	56.00'	45.00'	55.07'	N70°10'17"E
C80	46.00'	300.00'	46.44'	S89°54'30"E	C93	58.47'	100.00'	58.07'	N70°10'17"E
C81	78.00'	50.00'	78.00'	S88°30'20"E	C94	68.16'	100.00'	58.67'	S89°54'30"E
C82	48.00'	100.00'	48.07'	N70°10'17"E	C95	107.72'	100.00'	103.30'	S89°54'30"E
C83	48.00'	100.00'	48.00'	S89°54'30"E	C96	103.30'	53.00'	97.48'	S88°30'20"E
C84	88.00'	100.00'	18.84'	S81°46'31"E					

FUTURE DEVELOPMENT  
BLAKE FAMILY  
ITAC 62 LLC

JOSEPH K. STANLEY  
D.B. 689 PG. 944



LEGEND  
● REDAR SET  
○ MAG NAIL SET (POST CONSTRUCTION)



PHASE II - SECTION V  
CADES COVE SUBDIVISION  
SOUTHPORT, NC, BRUNSWICK  
PART OF PID 2210002706 SMITHVILLE TWP.



314 N Green Meadows Dr Suite 100  
Wilmington, North Carolina 28405  
www.geoinnovation.com  
Survey Solutions, PLLC  
910.798.0096 Voice  
910.798.3327 Fax

OWNER:  
BLAKE FAMILY  
ITAC 62 LLC  
SOUTHPORT, NC, 28461

DATE: 9/29/08  
SCALE: 1"=50'  
DRAWN: CW  
CHECKED: DSE  
PROJECT NO: 06 007  
SHEET NO: 2  
OF: 2